

# News Release



FOR IMMEDIATE RELEASE:

## Home buyer demand depends on property type

**VANCOUVER, BC – February 2, 2018** – Attached and apartment homes are in demand across Metro Vancouver\* while detached home buyers are facing less competition today.

The Real Estate Board of Greater Vancouver (REBGV) reports that residential home sales in the region totalled 1,818 in January 2018, a 19.4 per cent increase from the 1,523 sales recorded in January 2017, and a 9.8 per cent decrease compared to December 2017 when 2,016 homes sold.

Last month's sales were 7.1 per cent above the 10-year January sales average. By property type, detached sales were down 24.8 per cent from the 10-year January average, attached sales increased 14.3 per cent and apartment sales were up 31.6 per cent over the same period.

“Demand remains elevated and listings scarce in the attached and apartment markets across Metro Vancouver,” Jill Oudil, REBGV president said. “Buyers in the detached market are facing less competition and have much more selection to choose. For detached home sellers to be successful, it’s important to set prices that reflect today’s market trends.”

There were 3,796 detached, attached and apartment properties newly listed for sale on the Multiple Listing Service® (MLS®) in Metro Vancouver in January 2018. This represents an 8.3 per cent decrease compared to the 4,140 homes listed in January 2017 and a 100.7 per cent increase compared to December 2017 when 1,891 homes were listed.

The total number of properties currently listed for sale on the MLS® system in Metro Vancouver is 6,947, a four per cent decrease compared to January 2017 (7,238) and a 0.2 per cent decrease compared to December 2017 (6,958).

For all property types, the sales-to-active listings ratio for January 2018 is 26.2 per cent. By property type, the ratio is 11.6 per cent for detached homes, 32.8 per cent for townhomes, and 57.2 per cent for condominiums.

Generally, analysts say that downward pressure on home prices occurs when the ratio dips below the 12 per cent mark for a sustained period, while home prices often experience upward pressure when it surpasses 20 per cent over several months.

The MLS® Home Price Index composite benchmark price for all residential homes in Metro Vancouver is currently \$1,056,500. This represents a 16.6 per cent increase over January 2017 and a 0.6 per cent increase compared to December 2017.

Detached home sales in January 2018 reached 487, a 9.7 per cent increase from the 444 detached sales recorded in January 2017. The benchmark price for detached properties is \$1,601,500. This represents an 8.3 per cent increase from January 2017 and a 0.3 per cent decrease compared to December 2017.

Apartment home sales reached 1,012 in January 2018, a 22.7 per cent increase compared to the 825 sales in January 2017. The benchmark price of an apartment property is \$665,400. This represents a 27.4 per cent increase from January 2017 and a 1.5 per cent increase compared to December 2017.

Attached home sales in January 2018 totalled 319, a 25.6 per cent increase compared to the 254 sales in January 2017. The benchmark price of an attached unit is \$803,700. This represents a 17.5 per cent increase from January 2017 and unchanged compared to December 2017.

-30-

\*Editor's Note: Areas covered by the Real Estate Board of Greater Vancouver include: Whistler, Sunshine Coast, Squamish, West Vancouver, North Vancouver, Vancouver, Burnaby, New Westminster, Richmond, Port Moody, Port Coquitlam, Coquitlam, Pitt Meadows, Maple Ridge, and South Delta.

The real estate industry is a key economic driver in British Columbia. In 2017, 35,993 homes changed ownership in the Board's area, generating \$2.4 billion in economic spin-off activity and an estimated 17,600 jobs. The total dollar value of residential sales transacted through the MLS® system in Greater Vancouver totalled \$37 billion in 2017.

The Real Estate Board of Greater Vancouver is an association representing more than 14,000 REALTORS® and their companies. The Board provides a variety of member services, including the Multiple Listing Service®. For more information on real estate, statistics, and buying or selling a home, contact a local REALTOR® or visit [www.rebgv.org](http://www.rebgv.org).

For more information please contact:

**Mark Moldowan**

Senior Writer, Communication

Real Estate Board of Greater Vancouver

604.730.3153

[mmoldowan@rebgv.org](mailto:mmoldowan@rebgv.org)



| Property Type           | Area              | Benchmark Price | Price Index | 1 Month Change % | 3 Month Change % | 6 Month Change % | 1 Year Change % | 3 Year Change % | 5 Year Change % | 10 Year Change % |
|-------------------------|-------------------|-----------------|-------------|------------------|------------------|------------------|-----------------|-----------------|-----------------|------------------|
| Residential / Composite | Lower Mainland    | \$961,200       | 271.2       | 0.9%             | 2.1%             | 4.5%             | 18.4%           | 67.1%           | 79.6%           | 88.1%            |
|                         | Greater Vancouver | \$1,056,500     | 276.2       | 0.6%             | 1.4%             | 3.6%             | 16.6%           | 63.0%           | 78.0%           | 90.2%            |
|                         | Bowen Island      | \$941,400       | 204.1       | -1.3%            | -1.8%            | 3.1%             | 13.4%           | 62.1%           | 64.3%           | 49.6%            |
|                         | Burnaby East      | \$958,100       | 266.5       | -0.4%            | 1.8%             | 1.8%             | 14.5%           | 60.8%           | 75.4%           | 83.5%            |
|                         | Burnaby North     | \$916,700       | 276.8       | 1.2%             | 2.7%             | 6.3%             | 17.6%           | 66.8%           | 80.8%           | 90.5%            |
|                         | Burnaby South     | \$1,021,100     | 288.4       | 1.2%             | 2.5%             | 4.6%             | 16.1%           | 65.9%           | 84.3%           | 101.1%           |
|                         | Coquitlam         | \$933,200       | 276.8       | 0.8%             | 2.6%             | 5.4%             | 23.4%           | 71.0%           | 88.6%           | 94.4%            |
|                         | Ladner            | \$867,500       | 243.5       | -1.0%            | 0.7%             | 2.4%             | 9.8%            | 53.1%           | 64.9%           | 75.4%            |
|                         | Maple Ridge       | \$700,000       | 235.4       | 1.2%             | 2.9%             | 7.5%             | 22.1%           | 74.4%           | 77.4%           | 69.4%            |
|                         | New Westminster   | \$675,600       | 289.6       | 1.2%             | 3.7%             | 7.3%             | 26.1%           | 75.8%           | 88.2%           | 92.9%            |
|                         | North Vancouver   | \$1,093,400     | 245.7       | 0.2%             | 0.0%             | 0.6%             | 12.6%           | 56.7%           | 71.9%           | 76.0%            |
|                         | Pitt Meadows      | \$699,600       | 255.9       | 1.6%             | 4.5%             | 10.7%            | 25.1%           | 72.6%           | 85.6%           | 80.3%            |
|                         | Port Coquitlam    | \$736,500       | 259.8       | 0.4%             | 2.3%             | 4.6%             | 24.7%           | 73.7%           | 83.1%           | 79.2%            |
|                         | Port Moody        | \$929,100       | 256.8       | 0.6%             | 2.6%             | 7.3%             | 21.2%           | 69.7%           | 86.4%           | 81.9%            |
|                         | Richmond          | \$1,014,800     | 296.3       | 1.1%             | 3.0%             | 5.0%             | 17.0%           | 67.1%           | 80.0%           | 105.5%           |
|                         | Squamish          | \$804,700       | 257.6       | -1.0%            | -1.2%            | 8.9%             | 19.5%           | 82.2%           | 108.9%          | 96.8%            |
|                         | Sunshine Coast    | \$585,100       | 205.0       | 0.3%             | -0.6%            | 3.1%             | 15.6%           | 65.7%           | 64.8%           | 49.2%            |
|                         | Tsawwassen        | \$998,600       | 250.8       | -1.2%            | -0.2%            | 1.2%             | 9.5%            | 59.6%           | 70.4%           | 79.4%            |
|                         | Vancouver East    | \$1,094,200     | 320.4       | 0.5%             | 0.9%             | 1.9%             | 14.8%           | 64.5%           | 84.6%           | 113.3%           |
|                         | Vancouver West    | \$1,355,400     | 285.8       | 0.3%             | -0.5%            | 0.8%             | 13.7%           | 55.6%           | 73.7%           | 89.5%            |
| West Vancouver          | \$2,610,100       | 280.6           | 0.2%        | 0.2%             | -1.6%            | 7.4%             | 49.3%           | 69.6%           | 93.1%           |                  |
| Whistler                | \$942,400         | 207.2           | -1.5%       | -2.6%            | 11.8%            | 20.5%            | 77.5%           | 98.7%           | 59.3%           |                  |
| Single Family Detached  | Lower Mainland    | \$1,323,100     | 280.7       | 0.1%             | 0.1%             | 0.2%             | 10.6%           | 62.3%           | 78.6%           | 99.2%            |
|                         | Greater Vancouver | \$1,601,500     | 294.3       | -0.3%            | -0.5%            | -0.7%            | 8.3%            | 58.0%           | 76.9%           | 105.7%           |
|                         | Bowen Island      | \$941,400       | 204.1       | -1.3%            | -1.8%            | 3.1%             | 13.4%           | 62.1%           | 64.3%           | 49.6%            |
|                         | Burnaby East      | \$1,266,900     | 283.3       | -2.0%            | 0.7%             | -1.5%            | 10.1%           | 63.8%           | 79.6%           | 100.4%           |
|                         | Burnaby North     | \$1,567,900     | 303.2       | -0.7%            | -0.6%            | -1.1%            | 5.9%            | 56.0%           | 75.7%           | 109.8%           |
|                         | Burnaby South     | \$1,668,000     | 319.3       | -0.7%            | -2.2%            | -2.9%            | 2.0%            | 57.2%           | 80.7%           | 127.3%           |
|                         | Coquitlam         | \$1,280,600     | 284.2       | -0.2%            | 0.2%             | 0.3%             | 15.5%           | 64.6%           | 84.1%           | 103.6%           |
|                         | Ladner            | \$1,017,200     | 245.2       | -1.2%            | -1.0%            | 0.7%             | 5.1%            | 53.0%           | 66.9%           | 79.9%            |
|                         | Maple Ridge       | \$833,600       | 237.5       | 0.8%             | 2.7%             | 5.0%             | 17.1%           | 73.4%           | 81.7%           | 74.5%            |
|                         | New Westminster   | \$1,148,500     | 286.5       | -0.9%            | 1.4%             | -0.2%            | 12.4%           | 67.5%           | 79.5%           | 102.2%           |
|                         | North Vancouver   | \$1,670,100     | 261.2       | -0.6%            | -1.8%            | -2.7%            | 5.5%            | 59.1%           | 80.0%           | 89.1%            |
|                         | Pitt Meadows      | \$904,600       | 254.9       | 1.2%             | 2.9%             | 4.2%             | 17.4%           | 69.6%           | 83.6%           | 84.4%            |
|                         | Port Coquitlam    | \$978,500       | 260.9       | -1.7%            | -1.6%            | -1.7%            | 16.9%           | 65.5%           | 78.6%           | 87.3%            |
|                         | Port Moody        | \$1,494,500     | 276.0       | -0.5%            | -1.0%            | 3.3%             | 11.3%           | 62.1%           | 84.1%           | 95.3%            |
|                         | Richmond          | \$1,690,500     | 339.5       | -0.1%            | 0.0%             | 0.5%             | 8.2%            | 63.8%           | 80.2%           | 132.9%           |
|                         | Squamish          | \$1,003,000     | 256.0       | -1.3%            | 2.0%             | 3.4%             | 18.2%           | 79.5%           | 106.6%          | 97.4%            |
|                         | Sunshine Coast    | \$583,400       | 204.4       | 0.6%             | -0.2%            | 3.4%             | 16.1%           | 66.3%           | 64.8%           | 48.8%            |
|                         | Tsawwassen        | \$1,261,800     | 271.7       | -1.6%            | -1.1%            | -0.1%            | 8.5%            | 66.0%           | 81.3%           | 94.2%            |
|                         | Vancouver East    | \$1,564,000     | 345.7       | 0.3%             | -0.2%            | 0.1%             | 8.6%            | 60.5%           | 91.1%           | 140.2%           |
|                         | Vancouver West    | \$3,548,400     | 364.3       | -0.2%            | -2.1%            | -3.2%            | 3.8%            | 50.9%           | 77.6%           | 129.1%           |
| West Vancouver          | \$3,099,500       | 292.6           | 0.2%        | 0.1%             | -2.5%            | 5.7%             | 47.9%           | 70.8%           | 99.3%           |                  |
| Whistler                | \$1,680,700       | 213.1           | 1.5%        | 3.1%             | 5.4%             | 18.4%            | 69.9%           | 86.6%           | 64.2%           |                  |

**HOW TO READ THE TABLE:**

- Benchmark Price: Estimated sale price of a benchmark property. Benchmarks represent a typical property within each market.
- Price Index: Index numbers estimate the percentage change in price on typical and constant quality properties over time. All figures are based on past sales.
- x Month/Year Change %: Percentage change of index over a period of x month(s)/year(s)  
In January 2005, the indexes are set to 100.  
Townhome properties are similar to Attached properties, a category that was used in the previous MLSLink HPI, but do not include duplexes.  
The above info is deemed reliable, but is not guaranteed. All dollar amounts in CDN.

| Property Type  | Area              | Benchmark Price | Price Index | 1 Month Change % | 3 Month Change % | 6 Month Change % | 1 Year Change % | 3 Year Change % | 5 Year Change % | 10 Year Change % |
|----------------|-------------------|-----------------|-------------|------------------|------------------|------------------|-----------------|-----------------|-----------------|------------------|
| Townhouse      | Lower Mainland    | \$680,900       | 246.1       | 0.5%             | 1.5%             | 5.8%             | 19.6%           | 64.9%           | 72.5%           | 74.7%            |
|                | Greater Vancouver | \$803,700       | 259.3       | 0.0%             | 0.2%             | 5.2%             | 17.5%           | 61.7%           | 73.3%           | 83.0%            |
|                | Burnaby East      | \$667,900       | 246.7       | 1.3%             | 3.2%             | 8.7%             | 20.5%           | 55.5%           | 64.8%           | 73.6%            |
|                | Burnaby North     | \$733,800       | 273.9       | 0.8%             | 2.1%             | 6.5%             | 23.2%           | 60.7%           | 75.5%           | 86.7%            |
|                | Burnaby South     | \$786,400       | 270.9       | 2.8%             | 3.2%             | 4.1%             | 15.5%           | 60.2%           | 74.1%           | 89.7%            |
|                | Coquitlam         | \$662,600       | 243.1       | 0.0%             | 1.8%             | 5.0%             | 20.9%           | 62.4%           | 72.0%           | 75.4%            |
|                | Ladner            | \$776,000       | 270.6       | -0.1%            | 4.2%             | 5.1%             | 21.5%           | 63.6%           | 77.9%           | 84.5%            |
|                | Maple Ridge       | \$533,800       | 247.8       | 1.2%             | 0.8%             | 6.6%             | 28.7%           | 78.5%           | 76.5%           | 74.4%            |
|                | New Westminster   | \$694,200       | 274.5       | 0.1%             | 2.3%             | 7.4%             | 21.2%           | 60.7%           | 75.1%           | 90.1%            |
|                | North Vancouver   | \$991,800       | 241.0       | 0.9%             | 1.5%             | 4.4%             | 17.6%           | 61.4%           | 71.7%           | 77.5%            |
|                | Pitt Meadows      | \$590,300       | 255.4       | 0.4%             | 2.8%             | 8.5%             | 22.1%           | 70.2%           | 87.7%           | 80.9%            |
|                | Port Coquitlam    | \$635,600       | 239.8       | 0.5%             | -1.2%            | 1.7%             | 17.5%           | 66.6%           | 71.8%           | 68.5%            |
|                | Port Moody        | \$632,600       | 213.8       | 0.6%             | 4.3%             | 5.9%             | 23.4%           | 48.4%           | 54.1%           | 50.5%            |
|                | Richmond          | \$822,500       | 270.3       | 1.8%             | 2.8%             | 4.4%             | 14.8%           | 59.5%           | 72.2%           | 92.0%            |
|                | Squamish          | \$786,900       | 285.9       | -6.7%            | -12.5%           | 17.6%            | 11.7%           | 85.6%           | 124.4%          | 119.9%           |
|                | Tsawwassen        | \$763,300       | 284.3       | 1.1%             | 3.1%             | 5.1%             | 22.9%           | 69.4%           | 80.2%           | 93.8%            |
|                | Vancouver East    | \$857,600       | 281.5       | -2.5%            | 0.3%             | 0.3%             | 15.0%           | 56.4%           | 64.5%           | 85.2%            |
| Vancouver West | \$1,247,900       | 275.6           | 0.4%        | -1.4%            | 1.3%             | 11.6%            | 57.8%           | 77.1%           | 92.2%           |                  |
| Whistler       | \$914,300         | 244.5           | -8.5%       | -13.0%           | 19.1%            | 13.0%            | 70.0%           | 96.4%           | 92.1%           |                  |
| Apartment      | Lower Mainland    | \$622,800       | 272.3       | 2.1%             | 4.9%             | 10.1%            | 30.7%           | 77.3%           | 85.6%           | 81.2%            |
|                | Greater Vancouver | \$665,400       | 267.4       | 1.5%             | 3.6%             | 7.9%             | 27.4%           | 71.9%           | 82.5%           | 79.8%            |
|                | Burnaby East      | \$687,700       | 261.1       | 0.9%             | 4.0%             | 6.2%             | 28.9%           | 66.7%           | 86.6%           | 64.4%            |
|                | Burnaby North     | \$618,400       | 264.0       | 2.5%             | 5.3%             | 12.2%            | 27.9%           | 80.8%           | 88.8%           | 81.4%            |
|                | Burnaby South     | \$697,400       | 280.0       | 1.8%             | 5.0%             | 9.3%             | 26.5%           | 75.7%           | 91.4%           | 92.0%            |
|                | Coquitlam         | \$512,600       | 281.3       | 1.9%             | 5.3%             | 11.6%            | 35.5%           | 86.2%           | 102.8%          | 89.0%            |
|                | Ladner            | \$431,300       | 204.4       | -1.2%            | 2.0%             | 6.1%             | 13.2%           | 39.4%           | 41.0%           | 47.4%            |
|                | Maple Ridge       | \$291,500       | 210.5       | 3.3%             | 8.2%             | 23.0%            | 40.7%           | 76.7%           | 61.9%           | 40.1%            |
|                | New Westminster   | \$513,000       | 292.4       | 1.9%             | 4.5%             | 9.8%             | 32.2%           | 81.2%           | 93.1%           | 90.6%            |
|                | North Vancouver   | \$567,200       | 230.9       | 1.2%             | 1.9%             | 4.1%             | 22.9%           | 55.6%           | 64.7%           | 62.0%            |
|                | Pitt Meadows      | \$436,200       | 257.8       | 3.2%             | 8.0%             | 22.5%            | 40.9%           | 77.8%           | 86.3%           | 71.5%            |
|                | Port Coquitlam    | \$451,700       | 270.1       | 2.3%             | 8.0%             | 12.6%            | 37.6%           | 87.7%           | 95.7%           | 74.5%            |
|                | Port Moody        | \$642,600       | 267.8       | 1.6%             | 4.8%             | 11.4%            | 30.3%           | 90.5%           | 109.1%          | 91.1%            |
|                | Richmond          | \$649,900       | 277.4       | 2.0%             | 6.6%             | 11.6%            | 33.0%           | 81.7%           | 89.1%           | 90.9%            |
|                | Squamish          | \$490,400       | 236.2       | 5.5%             | 8.0%             | 10.0%            | 32.1%           | 86.1%           | 116.3%          | 75.9%            |
|                | Tsawwassen        | \$460,500       | 194.2       | -0.4%            | 1.8%             | 5.7%             | 13.6%           | 44.3%           | 41.8%           | 40.0%            |
|                | Vancouver East    | \$552,300       | 304.7       | 1.2%             | 2.6%             | 5.3%             | 25.9%           | 74.6%           | 84.4%           | 91.4%            |
| Vancouver West | \$812,400         | 263.6           | 0.6%        | 0.7%             | 3.7%             | 21.9%            | 63.3%           | 76.0%           | 76.9%           |                  |
| West Vancouver | \$1,179,400       | 238.9           | 0.7%        | 1.4%             | 3.7%             | 20.0%            | 62.8%           | 66.2%           | 70.9%           |                  |
| Whistler       | \$533,800         | 175.0           | 5.2%        | 7.1%             | 8.7%             | 32.7%            | 111.1%          | 150.0%          | 31.8%           |                  |

**HOW TO READ THE TABLE:**

- **Benchmark Price:** Estimated sale price of a benchmark property. Benchmarks represent a typical property within each market.
- **Price Index:** Index numbers estimate the percentage change in price on typical and constant quality properties over time. All figures are based on past sales.
- **x Month/Year Change %:** Percentage change of index over a period of x month(s)/year(s)

In January 2005, the indexes are set to 100.

Townhome properties are similar to attached properties, a category that was used in the previous MLSLink HPI, but do not include duplexes.

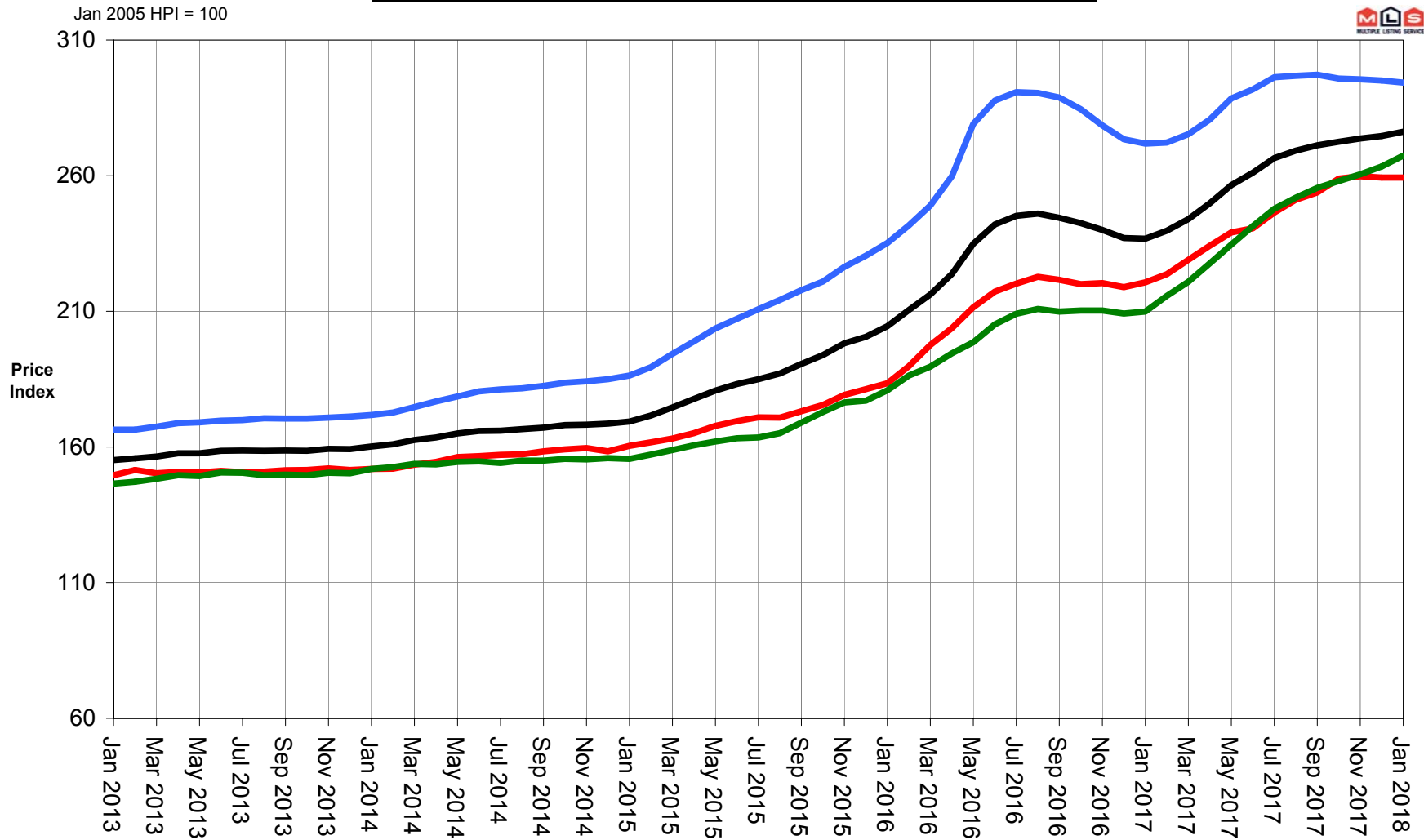
Lower Mainland includes areas serviced by both Real Estate Board of Greater Vancouver & Fraser Valley Real Estate Board.

The above info is deemed reliable, but is not guaranteed. All dollar amounts in CDN.



## Greater Vancouver 5 Year Trend

Residential Detached Townhouse Apartment



# MLS® SALES Facts



**January  
2018**

|  |                                     | <i>Burnaby</i> | <i>Coquitlam</i> | <i>Delta - South</i> | <i>Islands - Gulf</i> | <i>Maple Ridge/Pitt Meadows</i> | <i>New Westminster</i> | <i>North Vancouver</i> | <i>Port Coquitlam</i> | <i>Port Moody/Belcarra</i> | <i>Richmond</i> | <i>Squamish</i> | <i>Sunshine Coast</i> | <i>Vancouver East</i> | <i>Vancouver West</i> | <i>West Vancouver/Howe Sound</i> | <i>Whistler/Pemberton</i> | <b>TOTALS</b> |       |
|--|-------------------------------------|----------------|------------------|----------------------|-----------------------|---------------------------------|------------------------|------------------------|-----------------------|----------------------------|-----------------|-----------------|-----------------------|-----------------------|-----------------------|----------------------------------|---------------------------|---------------|-------|
| <b>January<br/>2018</b>                            | <b>Number<br/>of<br/>Sales</b>      | Detached       | 56               | 56                   | 14                    | 1                               | 74                     | 11                     | 30                    | 13                         | 3               | 66              | 6                     | 36                    | 45                    | 46                               | 15                        | 15            | 487   |
|  |                                     | Attached       | 35               | 19                   | 8                     | 0                               | 42                     | 13                     | 27                    | 16                         | 11              | 61              | 10                    | 5                     | 25                    | 24                               | 4                         | 19            | 319   |
|  |                                     | Apartment      | 112              | 80                   | 13                    | 0                               | 82                     | 72                     | 75                    | 29                         | 32              | 145             | 6                     | 6                     | 67                    | 243                              | 23                        | 27            | 1,012 |
|  | <b>Median<br/>Selling<br/>Price</b> | Detached       | \$1,650,000      | \$1,265,000          | n/a                   | n/a                             | \$879,960              | n/a                    | \$1,637,500           | n/a                        | n/a             | \$1,760,000     | n/a                   | \$624,500             | \$1,596,000           | \$3,600,000                      | n/a                       | n/a           | n/a   |
|  |                                     | Attached       | \$730,000        | n/a                  | n/a                   | n/a                             | \$548,500              | n/a                    | \$879,000             | n/a                        | n/a             | \$885,000       | n/a                   | n/a                   | \$899,900             | \$1,519,000                      | n/a                       | n/a           | n/a   |
|  |                                     | Apartment      | \$650,000        | \$552,500            | n/a                   | n/a                             | \$351,250              | \$501,000              | \$691,500             | \$425,000                  | \$595,450       | \$600,000       | n/a                   | n/a                   | \$619,450             | \$880,000                        | \$1,449,000               | \$259,000     | n/a   |
| <b>December<br/>2017</b>                           | <b>Number<br/>of<br/>Sales</b>      | Detached       | 44               | 50                   | 26                    | 1                               | 82                     | 17                     | 70                    | 20                         | 10              | 67              | 14                    | 49                    | 88                    | 36                               | 30                        | 13            | 617   |
|  |                                     | Attached       | 45               | 32                   | 8                     | 0                               | 40                     | 14                     | 21                    | 17                         | 15              | 77              | 18                    | 5                     | 33                    | 26                               | 1                         | 19            | 371   |
|  |                                     | Apartment      | 145              | 79                   | 5                     | 0                               | 40                     | 85                     | 78                    | 32                         | 11              | 141             | 11                    | 6                     | 116                   | 251                              | 10                        | 18            | 1,028 |
|  | <b>Median<br/>Selling<br/>Price</b> | Detached       | \$1,585,000      | \$1,390,400          | \$1,002,500           | n/a                             | \$865,000              | n/a                    | \$1,707,500           | \$948,700                  | n/a             | \$1,688,800     | n/a                   | \$695,000             | \$1,650,000           | \$3,200,000                      | \$3,600,000               | n/a           | n/a   |
|  |                                     | Attached       | \$795,000        | \$749,400            | n/a                   | n/a                             | \$539,000              | n/a                    | \$965,000             | n/a                        | n/a             | \$825,800       | n/a                   | n/a                   | \$1,190,000           | \$1,610,000                      | n/a                       | n/a           | n/a   |
|  |                                     | Apartment      | \$539,500        | \$529,950            | n/a                   | n/a                             | \$339,000              | \$478,000              | \$622,500             | \$439,000                  | n/a             | \$545,000       | n/a                   | n/a                   | \$608,500             | \$788,000                        | n/a                       | n/a           | n/a   |
| <b>January<br/>2017</b>                            | <b>Number<br/>of<br/>Sales</b>      | Detached       | 40               | 35                   | 19                    | 4                               | 57                     | 11                     | 34                    | 14                         | 8               | 55              | 16                    | 32                    | 51                    | 36                               | 20                        | 12            | 444   |
|  |                                     | Attached       | 27               | 19                   | 8                     | 1                               | 29                     | 5                      | 13                    | 14                         | 13              | 47              | 11                    | 6                     | 12                    | 24                               | 3                         | 22            | 254   |
|  |                                     | Apartment      | 108              | 60                   | 11                    | 0                               | 35                     | 47                     | 59                    | 31                         | 22              | 123             | 8                     | 7                     | 75                    | 211                              | 13                        | 15            | 825   |
|  | <b>Median<br/>Selling<br/>Price</b> | Detached       | \$1,500,000      | \$1,055,000          | n/a                   | n/a                             | \$679,250              | n/a                    | \$1,600,000           | n/a                        | n/a             | \$1,560,000     | n/a                   | \$451,191             | \$1,355,000           | \$2,820,000                      | \$2,675,000               | n/a           | n/a   |
|  |                                     | Attached       | \$690,000        | n/a                  | n/a                   | n/a                             | \$415,500              | n/a                    | n/a                   | n/a                        | n/a             | \$765,000       | n/a                   | n/a                   | n/a                   | \$1,231,900                      | n/a                       | \$767,500     | n/a   |
|  |                                     | Apartment      | \$490,250        | \$451,200            | n/a                   | n/a                             | \$294,000              | \$408,500              | \$552,500             | \$300,000                  | \$472,450       | \$414,900       | n/a                   | n/a                   | \$489,900             | \$670,000                        | n/a                       | n/a           | n/a   |
| <b>Jan. -<br/>Jan. 2018</b><br><i>Year-to-date</i> | <b>Number<br/>of<br/>Sales</b>      | Detached       | 56               | 56                   | 14                    | 1                               | 74                     | 11                     | 30                    | 13                         | 3               | 66              | 6                     | 36                    | 45                    | 46                               | 15                        | 15            | 487   |
|  |                                     | Attached       | 35               | 19                   | 8                     | 0                               | 42                     | 13                     | 27                    | 16                         | 11              | 61              | 10                    | 5                     | 25                    | 24                               | 4                         | 19            | 319   |
|  |                                     | Apartment      | 112              | 80                   | 13                    | 0                               | 82                     | 72                     | 75                    | 29                         | 32              | 145             | 6                     | 6                     | 67                    | 243                              | 23                        | 27            | 1,012 |
|  | <b>Median<br/>Selling<br/>Price</b> | Detached       | \$1,650,000      | \$1,265,000          | n/a                   | n/a                             | \$879,960              | n/a                    | \$1,637,500           | n/a                        | n/a             | \$1,760,000     | n/a                   | \$624,500             | \$1,596,000           | \$3,600,000                      | n/a                       | n/a           | n/a   |
|  |                                     | Attached       | \$730,000        | n/a                  | n/a                   | n/a                             | \$548,500              | n/a                    | \$879,000             | n/a                        | n/a             | \$885,000       | n/a                   | n/a                   | \$899,900             | \$1,519,000                      | n/a                       | n/a           | n/a   |
|  |                                     | Apartment      | \$650,000        | \$552,500            | n/a                   | n/a                             | \$351,250              | \$501,000              | \$691,500             | \$425,000                  | \$595,450       | \$600,000       | n/a                   | n/a                   | \$619,450             | \$880,000                        | \$1,449,000               | \$259,000     | n/a   |
| <b>Jan. -<br/>Jan. 2017</b><br><i>Year-to-date</i> | <b>Number<br/>of<br/>Sales</b>      | Detached       | 40               | 35                   | 19                    | 4                               | 57                     | 11                     | 34                    | 14                         | 8               | 55              | 16                    | 32                    | 51                    | 36                               | 20                        | 12            | 444   |
|  |                                     | Attached       | 27               | 19                   | 8                     | 1                               | 29                     | 5                      | 13                    | 14                         | 13              | 47              | 11                    | 6                     | 12                    | 24                               | 3                         | 22            | 254   |
|  |                                     | Apartment      | 108              | 60                   | 11                    | 0                               | 35                     | 47                     | 59                    | 31                         | 22              | 123             | 8                     | 7                     | 75                    | 211                              | 13                        | 15            | 825   |
|  | <b>Median<br/>Selling<br/>Price</b> | Detached       | \$1,500,000      | \$1,055,000          | n/a                   | n/a                             | \$679,250              | n/a                    | \$1,600,000           | n/a                        | n/a             | \$1,560,000     | n/a                   | \$451,191             | \$1,355,000           | \$2,820,000                      | \$2,675,000               | n/a           | n/a   |
|  |                                     | Attached       | \$690,000        | n/a                  | n/a                   | n/a                             | \$415,500              | n/a                    | n/a                   | n/a                        | n/a             | \$765,000       | n/a                   | n/a                   | n/a                   | \$1,231,900                      | n/a                       | \$767,500     | n/a   |
|  |                                     | Apartment      | \$490,250        | \$451,200            | n/a                   | n/a                             | \$294,000              | \$408,500              | \$552,500             | \$300,000                  | \$472,450       | \$414,900       | n/a                   | n/a                   | \$489,900             | \$670,000                        | n/a                       | n/a           | n/a   |

Note: Median Selling Prices are not reported for areas with less than 20 sales or for the Gulf Islands



# MLS® LISTINGS Facts



**January  
2018**

|   |                                   | <i>Burnaby</i> | <i>Coquitlam</i> | <i>Delta - South</i> | <i>Islands - Gulf</i> | <i>Maple Ridge/Pitt Meadows</i> | <i>New Westminster</i> | <i>North Vancouver</i> | <i>Port Coquitlam</i> | <i>Port Moody/Belcarra</i> | <i>Richmond</i> | <i>Squamish</i> | <i>Sunshine Coast</i> | <i>Vancouver East</i> | <i>Vancouver West</i> | <i>West Vancouver/Howe Sound</i> | <i>Whistler/Pemberton</i> | <b>TOTALS</b> |       |     |
|---|-----------------------------------|----------------|------------------|----------------------|-----------------------|---------------------------------|------------------------|------------------------|-----------------------|----------------------------|-----------------|-----------------|-----------------------|-----------------------|-----------------------|----------------------------------|---------------------------|---------------|-------|-----|
| <b>January<br/>2018</b>                             | <b>Number<br/>of<br/>Listings</b> | Detached       | 164              | 139                  | 84                    | 8                               | 117                    | 27                     | 144                   | 37                         | 20              | 236             | 39                    | 66                    | 176                   | 268                              | 137                       | 13            | 1,675 |     |
|   |                                   | Attached       | 78               | 42                   | 14                    | 2                               | 63                     | 28                     | 34                    | 29                         | 14              | 104             | 16                    | 4                     | 73                    | 81                               | 16                        | 20            | 618   |     |
|   |                                   | Apartment      | 180              | 85                   | 18                    | 0                               | 58                     | 83                     | 111                   | 36                         | 33              | 198             | 25                    | 10                    | 143                   | 453                              | 31                        | 39            | 1,503 |     |
|   | <b>% Sales to<br/>Listings</b>    | Detached       | 34%              | 40%                  | 17%                   | 13%                             | 63%                    | 41%                    | 21%                   | 35%                        | 15%             | 28%             | 15%                   | 55%                   | 26%                   | 17%                              | 11%                       | 115%          |       |     |
|   |                                   | Attached       | 45%              | 45%                  | 57%                   | 0%                              | 67%                    | 46%                    | 79%                   | 55%                        | 79%             | 59%             | 63%                   | 125%                  | 34%                   | 30%                              | 25%                       | 95%           |       | n/a |
|   |                                   | Apartment      | 62%              | 94%                  | 72%                   | n/a                             | 141%                   | 87%                    | 68%                   | 81%                        | 97%             | 73%             | 24%                   | 60%                   | 47%                   | 54%                              | 74%                       | 69%           |       |     |
| <b>December<br/>2017</b>                            | <b>Number<br/>of<br/>Listings</b> | Detached       | 78               | 59                   | 18                    | 2                               | 53                     | 26                     | 47                    | 20                         | 5               | 100             | 14                    | 40                    | 88                    | 72                               | 35                        | 20            | 677   |     |
|   |                                   | Attached       | 41               | 20                   | 5                     | 0                               | 31                     | 15                     | 20                    | 11                         | 16              | 66              | 6                     | 3                     | 24                    | 23                               | 3                         | 11            | 295   |     |
|   |                                   | Apartment      | 112              | 82                   | 6                     | 0                               | 72                     | 54                     | 54                    | 31                         | 13              | 132             | 5                     | 6                     | 93                    | 229                              | 10                        | 20            | 919   |     |
|   | <b>% Sales to<br/>Listings</b>    | Detached       | 56%              | 85%                  | 144%                  | 50%                             | 155%                   | 65%                    | 149%                  | 100%                       | 200%            | 67%             | 100%                  | 123%                  | 100%                  | 50%                              | 86%                       | 65%           |       |     |
|   |                                   | Attached       | 110%             | 160%                 | 160%                  | n/a                             | 129%                   | 93%                    | 105%                  | 155%                       | 94%             | 117%            | 300%                  | 167%                  | 138%                  | 113%                             | 33%                       | 173%          |       | n/a |
|   |                                   | Apartment      | 129%             | 96%                  | 83%                   | n/a                             | 56%                    | 157%                   | 144%                  | 103%                       | 85%             | 107%            | 220%                  | 100%                  | 125%                  | 110%                             | 100%                      | 90%           |       |     |
| <b>January<br/>2017</b>                             | <b>Number<br/>of<br/>Listings</b> | Detached       | 178              | 115                  | 106                   | 6                               | 134                    | 19                     | 137                   | 44                         | 24              | 344             | 31                    | 66                    | 219                   | 309                              | 166                       | 23            | 1,921 |     |
|   |                                   | Attached       | 71               | 38                   | 25                    | 0                               | 62                     | 17                     | 32                    | 22                         | 8               | 106             | 34                    | 10                    | 41                    | 73                               | 10                        | 26            | 575   |     |
|   |                                   | Apartment      | 205              | 123                  | 26                    | 0                               | 47                     | 96                     | 126                   | 51                         | 35              | 210             | 14                    | 7                     | 153                   | 494                              | 21                        | 36            | 1,644 |     |
|   | <b>% Sales to<br/>Listings</b>    | Detached       | 22%              | 30%                  | 18%                   | 67%                             | 43%                    | 58%                    | 25%                   | 32%                        | 33%             | 16%             | 52%                   | 48%                   | 23%                   | 12%                              | 12%                       | 52%           |       |     |
|   |                                   | Attached       | 38%              | 50%                  | 32%                   | n/a                             | 47%                    | 29%                    | 41%                   | 64%                        | 163%            | 44%             | 32%                   | 60%                   | 29%                   | 33%                              | 30%                       | 85%           |       | n/a |
|   |                                   | Apartment      | 53%              | 49%                  | 42%                   | n/a                             | 74%                    | 49%                    | 47%                   | 61%                        | 63%             | 59%             | 57%                   | 100%                  | 49%                   | 43%                              | 62%                       | 42%           |       |     |
| <b>Jan. -<br/>Jan. 2018</b><br><i>Year-to-date*</i> | <b>Number<br/>of<br/>Listings</b> | Detached       | 164              | 139                  | 84                    | 8                               | 117                    | 27                     | 144                   | 37                         | 20              | 236             | 39                    | 66                    | 176                   | 268                              | 137                       | 13            | 1,675 |     |
|   |                                   | Attached       | 78               | 42                   | 14                    | 2                               | 63                     | 28                     | 34                    | 29                         | 14              | 104             | 16                    | 4                     | 73                    | 81                               | 16                        | 20            | 618   |     |
|   |                                   | Apartment      | 180              | 85                   | 18                    | 0                               | 58                     | 83                     | 111                   | 36                         | 33              | 198             | 25                    | 10                    | 143                   | 453                              | 31                        | 39            | 1,503 |     |
|   | <b>% Sales to<br/>Listings</b>    | Detached       | 34%              | 40%                  | 17%                   | 13%                             | 63%                    | 41%                    | 21%                   | 35%                        | 15%             | 28%             | 15%                   | 55%                   | 26%                   | 17%                              | 11%                       | 115%          |       |     |
|   |                                   | Attached       | 45%              | 45%                  | 57%                   | 0%                              | 67%                    | 46%                    | 79%                   | 55%                        | 79%             | 59%             | 63%                   | 125%                  | 34%                   | 30%                              | 25%                       | 95%           |       | n/a |
|   |                                   | Apartment      | 62%              | 94%                  | 72%                   | n/a                             | 141%                   | 87%                    | 68%                   | 81%                        | 97%             | 73%             | 24%                   | 60%                   | 47%                   | 54%                              | 74%                       | 69%           |       |     |
| <b>Jan. -<br/>Jan. 2017</b><br><i>Year-to-date*</i> | <b>Number<br/>of<br/>Listings</b> | Detached       | 178              | 115                  | 106                   | 6                               | 134                    | 19                     | 137                   | 44                         | 24              | 344             | 31                    | 66                    | 219                   | 309                              | 166                       | 23            | 1,921 |     |
|   |                                   | Attached       | 71               | 38                   | 25                    | 0                               | 62                     | 17                     | 32                    | 22                         | 8               | 106             | 34                    | 10                    | 41                    | 73                               | 10                        | 26            | 575   |     |
|   |                                   | Apartment      | 205              | 123                  | 26                    | 0                               | 47                     | 96                     | 126                   | 51                         | 35              | 210             | 14                    | 7                     | 153                   | 494                              | 21                        | 36            | 1,644 |     |
|   | <b>% Sales to<br/>Listings</b>    | Detached       | 22%              | 30%                  | 18%                   | 67%                             | 43%                    | 58%                    | 25%                   | 32%                        | 33%             | 16%             | 52%                   | 48%                   | 23%                   | 12%                              | 12%                       | 52%           |       |     |
|   |                                   | Attached       | 38%              | 50%                  | 32%                   | n/a                             | 47%                    | 29%                    | 41%                   | 64%                        | 163%            | 44%             | 32%                   | 60%                   | 29%                   | 33%                              | 30%                       | 85%           |       | n/a |
|   |                                   | Apartment      | 53%              | 49%                  | 42%                   | n/a                             | 74%                    | 49%                    | 47%                   | 61%                        | 63%             | 59%             | 57%                   | 100%                  | 49%                   | 43%                              | 62%                       | 42%           |       |     |

\* Year-to-date listings represent a cumulative total of listings rather than total active listings.



# Listing & Sales Activity Summary

## Listings

## Sales

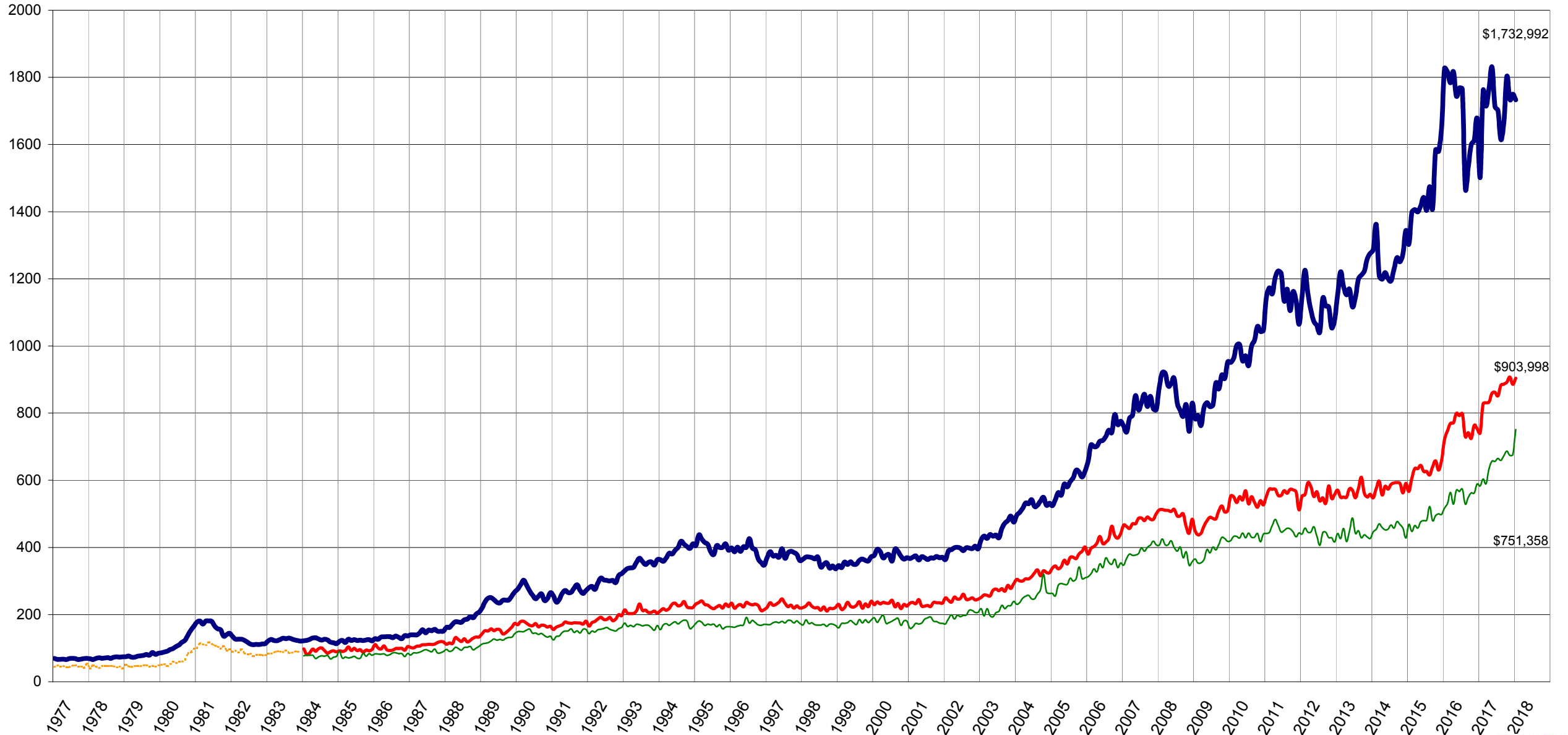
|                                  | 1<br>Jan<br>2017 | 2<br>Dec<br>2017 | 3<br>Jan<br>2018 | Col. 2 & 3<br>Percentage<br>Variance | 5<br>Jan<br>2017 | 6<br>Dec<br>2017 | 7<br>Jan<br>2018 | Col. 6 & 7<br>Percentage<br>Variance | 9<br>Nov 2016 -<br>Jan 2017 | 10<br>Nov 2017 -<br>Jan 2018 | Col. 9 & 10<br>Percentage<br>Variance |
|----------------------------------|------------------|------------------|------------------|--------------------------------------|------------------|------------------|------------------|--------------------------------------|-----------------------------|------------------------------|---------------------------------------|
| <b>BURNABY</b>                   |                  |                  |                  | <b>%</b>                             |                  |                  |                  | <b>%</b>                             |                             |                              | <b>%</b>                              |
| DETACHED                         | 178              | 78               | 164              | 110.3                                | 40               | 44               | 56               | 27.3                                 | 130                         | 176                          | 35.4                                  |
| ATTACHED                         | 71               | 41               | 78               | 90.2                                 | 27               | 45               | 35               | -22.2                                | 90                          | 127                          | 41.1                                  |
| APARTMENTS                       | 205              | 112              | 180              | 60.7                                 | 108              | 145              | 112              | -22.8                                | 381                         | 454                          | 19.2                                  |
| <b>COQUITLAM</b>                 |                  |                  |                  |                                      |                  |                  |                  |                                      |                             |                              |                                       |
| DETACHED                         | 115              | 59               | 139              | 135.6                                | 35               | 50               | 56               | 12.0                                 | 136                         | 186                          | 36.8                                  |
| ATTACHED                         | 38               | 20               | 42               | 110.0                                | 19               | 32               | 19               | -40.6                                | 68                          | 93                           | 36.8                                  |
| APARTMENTS                       | 123              | 82               | 85               | 3.7                                  | 60               | 79               | 80               | 1.3                                  | 211                         | 265                          | 25.6                                  |
| <b>DELTA</b>                     |                  |                  |                  |                                      |                  |                  |                  |                                      |                             |                              |                                       |
| DETACHED                         | 106              | 18               | 84               | 366.7                                | 19               | 26               | 14               | -46.2                                | 72                          | 77                           | 6.9                                   |
| ATTACHED                         | 25               | 5                | 14               | 180.0                                | 8                | 8                | 8                | 0.0                                  | 26                          | 23                           | -11.5                                 |
| APARTMENTS                       | 26               | 6                | 18               | 200.0                                | 11               | 5                | 13               | 160.0                                | 33                          | 24                           | -27.3                                 |
| <b>MAPLE RIDGE/PITT MEADOWS</b>  |                  |                  |                  |                                      |                  |                  |                  |                                      |                             |                              |                                       |
| DETACHED                         | 134              | 53               | 117              | 120.8                                | 57               | 82               | 74               | -9.8                                 | 206                         | 269                          | 30.6                                  |
| ATTACHED                         | 62               | 31               | 63               | 103.2                                | 29               | 40               | 42               | 5.0                                  | 113                         | 123                          | 8.8                                   |
| APARTMENTS                       | 47               | 72               | 58               | -19.4                                | 35               | 40               | 82               | 105.0                                | 108                         | 179                          | 65.7                                  |
| <b>NORTH VANCOUVER</b>           |                  |                  |                  |                                      |                  |                  |                  |                                      |                             |                              |                                       |
| DETACHED                         | 137              | 47               | 144              | 206.4                                | 34               | 70               | 30               | -57.1                                | 143                         | 176                          | 23.1                                  |
| ATTACHED                         | 32               | 20               | 34               | 70.0                                 | 13               | 21               | 27               | 28.6                                 | 55                          | 85                           | 54.5                                  |
| APARTMENTS                       | 126              | 54               | 111              | 105.6                                | 59               | 78               | 75               | -3.8                                 | 218                         | 288                          | 32.1                                  |
| <b>NEW WESTMINSTER</b>           |                  |                  |                  |                                      |                  |                  |                  |                                      |                             |                              |                                       |
| DETACHED                         | 19               | 26               | 27               | 3.8                                  | 11               | 17               | 11               | -35.3                                | 33                          | 54                           | 63.6                                  |
| ATTACHED                         | 17               | 15               | 28               | 86.7                                 | 5                | 14               | 13               | -7.1                                 | 22                          | 40                           | 81.8                                  |
| APARTMENTS                       | 96               | 54               | 83               | 53.7                                 | 47               | 85               | 72               | -15.3                                | 188                         | 285                          | 51.6                                  |
| <b>PORT MOODY/BELCARRA</b>       |                  |                  |                  |                                      |                  |                  |                  |                                      |                             |                              |                                       |
| DETACHED                         | 24               | 5                | 20               | 300.0                                | 8                | 10               | 3                | -70.0                                | 28                          | 31                           | 10.7                                  |
| ATTACHED                         | 8                | 16               | 14               | -12.5                                | 13               | 15               | 11               | -26.7                                | 30                          | 42                           | 40.0                                  |
| APARTMENTS                       | 35               | 13               | 33               | 153.8                                | 22               | 11               | 32               | 190.9                                | 63                          | 82                           | 30.2                                  |
| <b>PORT COQUITLAM</b>            |                  |                  |                  |                                      |                  |                  |                  |                                      |                             |                              |                                       |
| DETACHED                         | 44               | 20               | 37               | 85.0                                 | 14               | 20               | 13               | -35.0                                | 60                          | 60                           | 0.0                                   |
| ATTACHED                         | 22               | 11               | 29               | 163.6                                | 14               | 17               | 16               | -5.9                                 | 46                          | 57                           | 23.9                                  |
| APARTMENTS                       | 51               | 31               | 36               | 16.1                                 | 31               | 32               | 29               | -9.4                                 | 107                         | 104                          | -2.8                                  |
| <b>RICHMOND</b>                  |                  |                  |                  |                                      |                  |                  |                  |                                      |                             |                              |                                       |
| DETACHED                         | 344              | 100              | 236              | 136.0                                | 55               | 67               | 66               | -1.5                                 | 179                         | 207                          | 15.6                                  |
| ATTACHED                         | 106              | 66               | 104              | 57.6                                 | 47               | 77               | 61               | -20.8                                | 149                         | 222                          | 49.0                                  |
| APARTMENTS                       | 210              | 132              | 198              | 50.0                                 | 123              | 141              | 145              | 2.8                                  | 393                         | 477                          | 21.4                                  |
| <b>SUNSHINE COAST</b>            |                  |                  |                  |                                      |                  |                  |                  |                                      |                             |                              |                                       |
| DETACHED                         | 66               | 40               | 66               | 65.0                                 | 32               | 49               | 36               | -26.5                                | 116                         | 135                          | 16.4                                  |
| ATTACHED                         | 10               | 3                | 4                | 33.3                                 | 6                | 5                | 5                | 0.0                                  | 13                          | 19                           | 46.2                                  |
| APARTMENTS                       | 7                | 6                | 10               | 66.7                                 | 7                | 6                | 6                | 0.0                                  | 25                          | 19                           | -24.0                                 |
| <b>SQUAMISH</b>                  |                  |                  |                  |                                      |                  |                  |                  |                                      |                             |                              |                                       |
| DETACHED                         | 31               | 14               | 39               | 178.6                                | 16               | 14               | 6                | -57.1                                | 37                          | 42                           | 13.5                                  |
| ATTACHED                         | 34               | 6                | 16               | 166.7                                | 11               | 18               | 10               | -44.4                                | 38                          | 38                           | 0.0                                   |
| APARTMENTS                       | 14               | 5                | 25               | 400.0                                | 8                | 11               | 6                | -45.5                                | 36                          | 30                           | -16.7                                 |
| <b>VANCOUVER EAST</b>            |                  |                  |                  |                                      |                  |                  |                  |                                      |                             |                              |                                       |
| DETACHED                         | 219              | 88               | 176              | 100.0                                | 51               | 88               | 45               | -48.9                                | 191                         | 227                          | 18.8                                  |
| ATTACHED                         | 41               | 24               | 73               | 204.2                                | 12               | 33               | 25               | -24.2                                | 64                          | 109                          | 70.3                                  |
| APARTMENTS                       | 153              | 93               | 143              | 53.8                                 | 75               | 116              | 67               | -42.2                                | 316                         | 353                          | 11.7                                  |
| <b>VANCOUVER WEST</b>            |                  |                  |                  |                                      |                  |                  |                  |                                      |                             |                              |                                       |
| DETACHED                         | 309              | 72               | 268              | 272.2                                | 36               | 36               | 46               | 27.8                                 | 168                         | 165                          | -1.8                                  |
| ATTACHED                         | 73               | 23               | 81               | 252.2                                | 24               | 26               | 24               | -7.7                                 | 91                          | 92                           | 1.1                                   |
| APARTMENTS                       | 494              | 229              | 453              | 97.8                                 | 211              | 251              | 243              | -3.2                                 | 744                         | 874                          | 17.5                                  |
| <b>WHISTLER/PEMBERTON</b>        |                  |                  |                  |                                      |                  |                  |                  |                                      |                             |                              |                                       |
| DETACHED                         | 23               | 20               | 13               | -35.0                                | 12               | 13               | 15               | 15.4                                 | 34                          | 47                           | 38.2                                  |
| ATTACHED                         | 26               | 11               | 20               | 81.8                                 | 22               | 19               | 19               | 0.0                                  | 72                          | 54                           | -25.0                                 |
| APARTMENTS                       | 36               | 20               | 39               | 95.0                                 | 15               | 18               | 27               | 50.0                                 | 81                          | 68                           | -16.0                                 |
| <b>WEST VANCOUVER/HOWE SOUND</b> |                  |                  |                  |                                      |                  |                  |                  |                                      |                             |                              |                                       |
| DETACHED                         | 166              | 35               | 137              | 291.4                                | 20               | 30               | 15               | -50.0                                | 77                          | 82                           | 6.5                                   |
| ATTACHED                         | 10               | 3                | 16               | 433.3                                | 3                | 1                | 4                | 300.0                                | 10                          | 12                           | 20.0                                  |
| APARTMENTS                       | 21               | 10               | 31               | 210.0                                | 13               | 10               | 23               | 130.0                                | 36                          | 46                           | 27.8                                  |
| <b>GRAND TOTALS</b>              |                  |                  |                  |                                      |                  |                  |                  |                                      |                             |                              |                                       |
| DETACHED                         | <b>1915</b>      | <b>675</b>       | <b>1667</b>      | <b>147.0</b>                         | <b>440</b>       | <b>616</b>       | <b>486</b>       | <b>-21.1</b>                         | <b>1610</b>                 | <b>1934</b>                  | <b>20.1</b>                           |
| ATTACHED                         | <b>575</b>       | <b>295</b>       | <b>616</b>       | <b>108.8</b>                         | <b>253</b>       | <b>371</b>       | <b>319</b>       | <b>-14.0</b>                         | <b>887</b>                  | <b>1136</b>                  | <b>28.1</b>                           |
| APARTMENTS                       | <b>1644</b>      | <b>919</b>       | <b>1503</b>      | <b>63.5</b>                          | <b>825</b>       | <b>1028</b>      | <b>1012</b>      | <b>-1.6</b>                          | <b>2940</b>                 | <b>3548</b>                  | <b>20.7</b>                           |



## Residential Average Sale Prices - January 1977 to January 2018

— DETACHED    - - - CONDOMINIUM    — ATTACHED    — APARTMENTS

IN THOUSANDS (\$)



NOTE: From 1977 - 1984 condominium averages were not separated into attached & apartment.